

SNCF & BIODIVERSITY, MULTIPLE INTERACTIONS

Christian DUBOST,
Director of sustainable development
24/11/2017



SNCF GROUP

A CHAMPION OF SHARED MOBILITY IN FRANCE AND AROUND THE WORLD



REVENUE

€32.3 bn

INVESTMENT

€8.2bn

(ALL FUNDING SOURCES)
INCL **70% SNCF**



INTERNATIONAL

34%*
OF SALES
PRESENT IN 120 COUNTRIES

13.5 million
PASSENGERS CARRIED DAILY IN FRANCE AND AROUND
THE WORD, INCLUDING
5 million ON TRAINS IN FRANCE



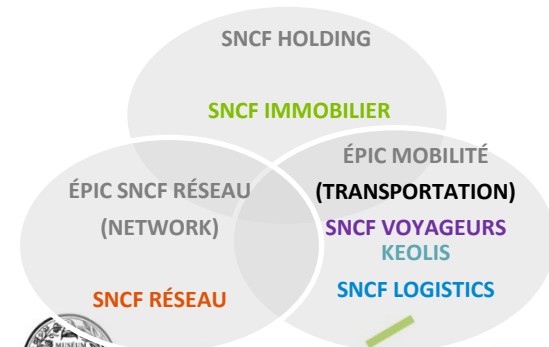
RAIL NETWORK

30,000 KM
OF TRACK, INCL 2,000 KM
OF HIGH-SPEED LINE



STAFF

260,000
EMPLOYEES

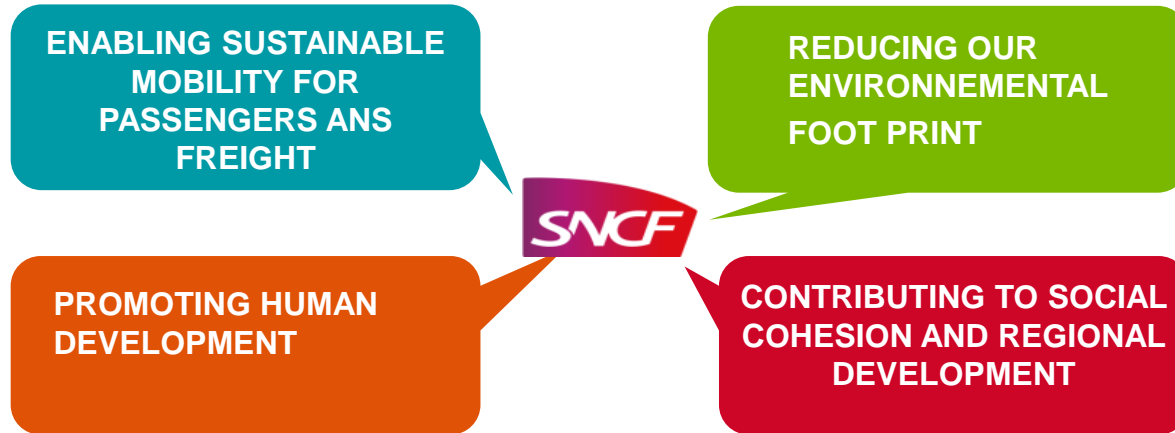


SNCF & SUSTAINABLE DEVELOPMENT

Our strategic goal :

SNCF TO BE AN EXEMPLARY AND RESPONSABLE COMPANY, LEADER OF SUSTAINABLE MOBILITY

CSR report : 4 issues, 12 commitments



COMMITMENT 6-

Minimising environmental impact



Protection of biodiversity



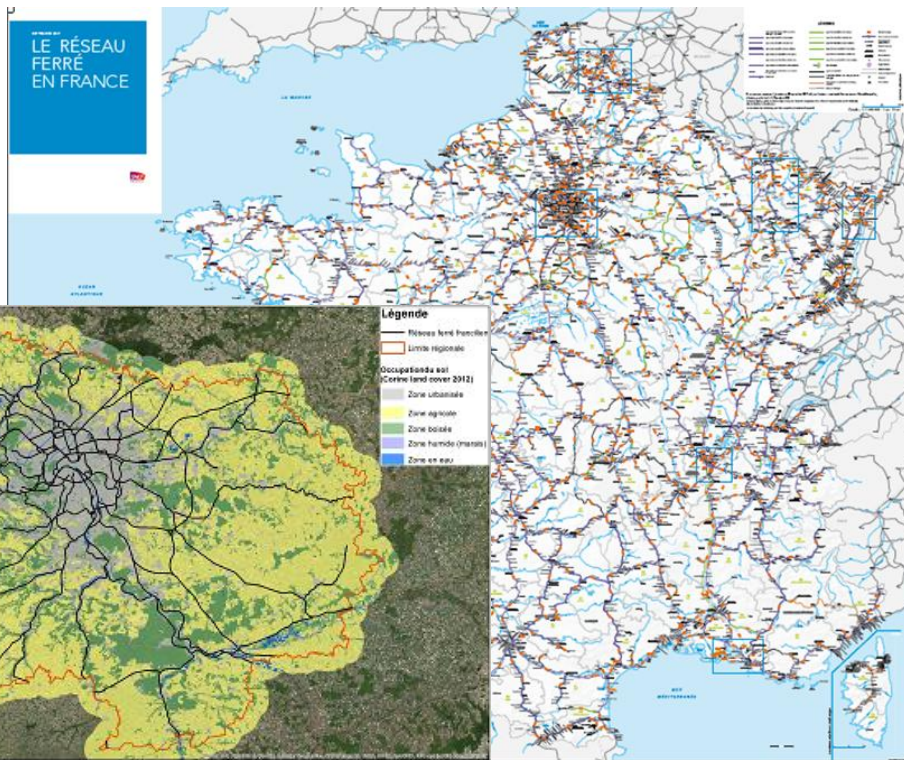
SNCF IN INTERACTION WITH NATURE

SNCF is distinguishable from firms mainly concerned by biodiversity indirect impacts.

SNCF group manages huge projects : new high speed lines, modernizations... with possible negative interactions

In continental France, SNCF is an asset manager characterized by :

- 32 000 km of existing lines,
- 100 000 hectares of rights of way, including 50 000 of green dependencies in full property of SNCF Réseau,
- 3029 passenger stations with green areas,
- ~50 industrial plants.



MUSÉUM
NATIONAL D'HISTOIRE NATURELLE



Entreprises, territoires et environnement

SNCF AND SUSTAINABLE DEVELOPMENT GOALS



- **15.1** By 2020, ensure the conservation, restoration and sustainable use of terrestrial and inland freshwater ecosystems and their services,....
- **15.5** Take urgent and significant action to reduce the degradation of natural habitats, halt the loss of biodiversity and, by 2020, ...
- **15.8** By 2020, introduce measures to prevent the introduction and significantly reduce the impact of invasive alien species on land ...
- **15.9** By 2020, integrate ecosystem and biodiversity values into national and local planning, ...

SDG feeds only partially
SNCF strategy on biodiversity
SNCF didn't wait for SDG to
take care of biodiversity

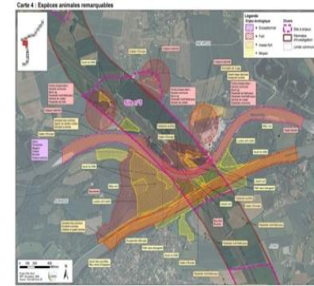
- Application of the sequence avoid/reduce/compensate
- Studies show that railway infrastructure corridors have a role as ecological corridors



SNCF AND INFRASTRUCTURE PROJECTS

Ecoconception limits ecological compensation

- **Avoid** : ecological inventories made, prioritisation of issues



- **Reduce** : Restore ecological continuities



- **Compensate** : habitat restoration (pool creation)



SNCF ASSET MANAGER



Cleaning and ecological maintenance line re-opening



Control of invasive species



Urban ecology : maintenance of the « petite-ceinture » and ecological inventory



Eco-pasture



Differentiated management applied to station green areas, development of flowered meadows



Policy to reduce clash against the wildlife



SNCF ECOSYSTEM FOR BIODIVERSITY

Research support :

- Valorisation of inventories, participation to research projects (investments of 1M€ since 2011), partnership with UICN (seminar on « infrastructure corridor, ecological corridor »)

SÉMINAIRE • 3 NOVEMBRE 2014 • Maison des Travaux Publics • Paris

Corridors d'infrastructures,
corridors écologiques ?

Quelles contributions des infrastructures linéaires de transport
et leurs emprises aux continuités écologiques ?

avec la collaboration de 

SNCF doesn't work alone :

- partnerships with associations : FNE, LPO, FNC...
- Association with counterparts : CIL&B (linear infrastructure club and biodiversity)



AGIR pour la
BIODIVERSITÉ

CIL&B
Club Infrastructures
Linéaires et Biodiversité



SNCF active member of french governance on biodiversity protection :

- Member of the national biodiversity council,
- Member of the strategic orientation board of the biodiversity research foundation



MUSÉUM
NATIONAL D'HISTOIRE NATURELLE

